



# Self Assembly Bird Table Instructions

Please read these instructions carefully before commencing assembly.

Tools required: crosshead screwdriver, tape/ruler.

## Instructions

Site out of reach of predators.

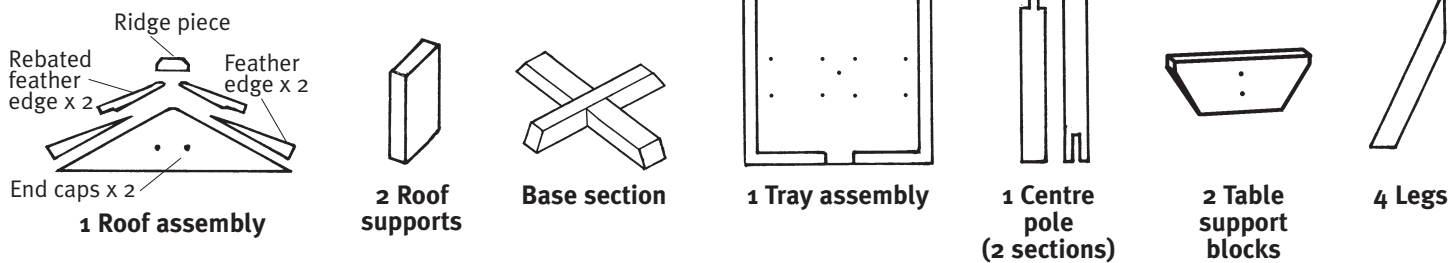
## Care

We recommend that you clean your feeders and bird tables with a mild disinfectant solution once every two months or more often in warm weather. Remove as much old food and debris as possible. Wash and thoroughly rinse all items\*. Periodically reposition your feeders and tables to a different area within the garden to avoid an accumulation of unhygienic deposits.

\* Wash equipment outdoors, wear gloves and wash hands thoroughly afterwards.

## Contents

- 16 x 25mm screws
- 25 x 40mm screws
- 6 x 60mm screws



### Step 1

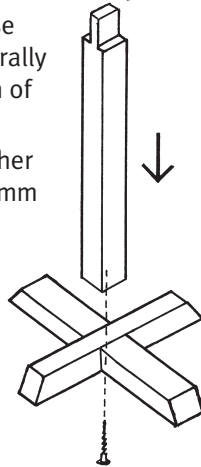
#### Roof Assembly

- 1 Attach end caps to ridge piece using 2 x 40mm screws. Do not fully tighten screws.
- 2 Attach rebated feather edge under ridge piece edge with 2 x 25mm screws each end.
- 3 Attach standard feather edge to end caps using 2 x 25mm screws.
- 4 Fully tighten ridge piece screws.

### Step 2

#### Base Assembly

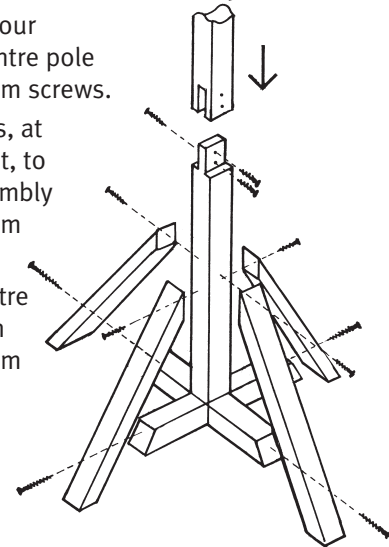
- 1 Position base section centrally onto bottom of centre pole.
- 2 Screw together using 1 x 60mm screw.



### Step 3

#### Pole & Leg Assembly

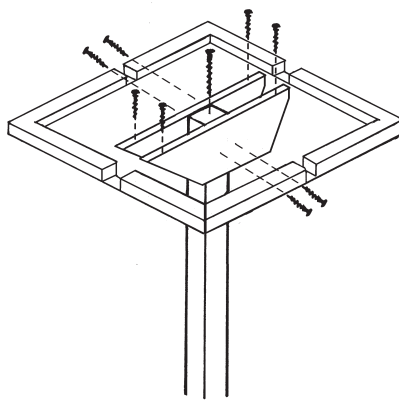
- 1 Screw top of four legs to the centre pole using 4 x 40mm screws.
- 2 Screw the legs, at their mid point, to the base assembly using 4 x 60mm screws.
- 3 Assemble centre pole as shown using 3 x 40mm screws.



### Step 4

#### Tray & Leg Assembly

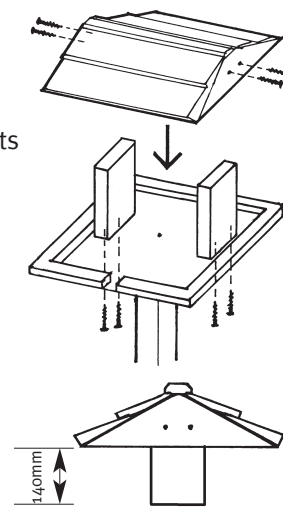
- 1 Position table assembly centrally on top of centre pole and fix with 1 x 60mm screw.
- 2 Screw the two table support blocks to each side of the centre pole. Use 2 x 40mm screws per support block.
- 3 Fix tray onto support blocks using 2 x 40mm screws in each piece.



### Step 5

#### Roof Assembly

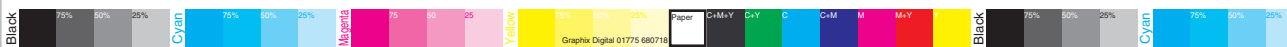
- 1 Attach the two roof supports centrally onto the roof assembly using 4 x 40mm screws allowing roof support to protrude 140mm below roof assembly.
- 2 Position complete roof assembly onto the tray assembly and fix with 4 x 40mm screws from underneath.



**For Customer Services Telephone:  
+44 (0) 1406 372227**

A03072

Horizontal printer output check - this line measures 170mm



**GRAPHIX DIGITAL**

tudor gables thary lane surfleet spalding

lincolnshire pe11 4bn united kingdom

t: +44 (0)1775 680718

e: studio@graphixonline.co.uk

www.graphixonline.co.uk



client: Gardman Ltd\_AB  
date: 27.03.08  
job no: 4948.2\_A03072  
title: SABT Instruction  
size: A4 1pp

Cyan PMS  
Magenta PMS  
Yellow PMS  
Black PMS  
Cutter (do not print) PMS

approval  
method:  
approved:  
date:

Vertical printer output check - this line measures 75mm